



1

1st Taskforce Team Meeting

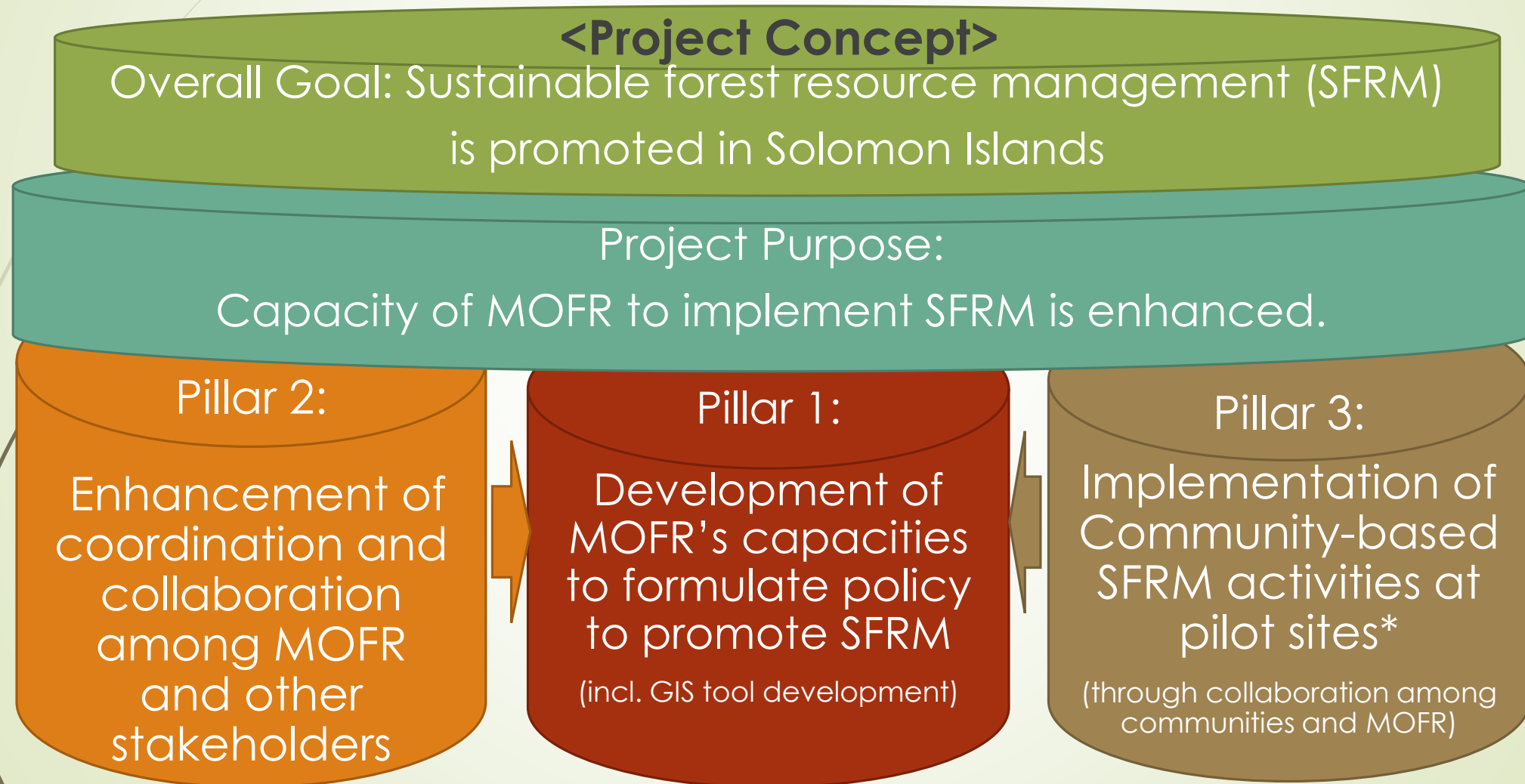
16 May, 2018

Today's Goals

- To understand our JICA-MOFR Forestry Project
- To understand the pilot activities for Community-based Forest Resource Management
- To understand purpose, roles & responsibilities, and rules of taskforce team
- To understand what this team needs to do by next meeting

What's JICA-MOFR Forestry Project?

JICA-MOFR Forestry Project



*pilot sites are yet to be selected

JICA-MOFR Forestry Project

<Overview>

Project Title:	Project on Capacity Development for Sustainable Forest Resources Management in Solomon Islands
Type of Project	Technical Cooperation Project
Project Purpose:	To enhance the capacities of Ministry of Forestry and Research (MOFR) to implement Sustainable Forest Resource Management (SFRM) in Solomon Islands
Implementation Agency	Ministry of Forestry and Research (HQ and Provincial Offices)
Project Period	5 years (Sep. 2017 – Aug. 2022)
Major Inputs from JICA	<p><Long-Term Experts> 1) Chief Advisor (Forest Policy), 2) Project Coordinator (Community-based SFRM)</p> <p><Short-Term Experts> 1) GIS Development Expert, 2) Socio-Economic Analysis Expert, 3) Value-Chain Development Expert, 4) Agroforestry Expert</p> <p><Equipment & Machinery> 1) Landcruiser, 2) OBM, 3) GPSs, 4) Drones etc...</p>

Basic understanding on JICA-MOFR Forestry Project

- ▶ Technical Cooperation Project = Not grant/financing program but provides technical assistance to MOFR and pilot communities
- ▶ Project will support technically and financially to implement project activities, but allowances (ex. touring allowances) for MOFR staff as well as other participants will be catered by MOFR, in principle.

The Pilot Activities for “Community-based Forest Resource Management”?

Community-base Sustainable Forest Resource Management <Definition>

Community-based Resource Management

- In accordance with “Community-based Resource Management” under Coral Triangle Initiatives (CTI),
 - Management = To implement actions, rules or controls to achieve a defined goal or specific purpose
 - Community-based Resource Management = Management of natural resources (such as forests, forest products, fish etc.) that is primary driven by, or occurring at, the community level. Management rules may target the resources themselves or the environment in which these resource exists.

Sustainable Forest Management

- In accordance with “Definition and Basic Principles of SFM” of FAO/UNEP/ITTO,
 - Sustainable Forest Management = It is stewardship and use of forests and forest lands in a way, and at a rate, that maintains their biological diversity, productivity, regeneration capacity, vitality and their potential to fulfill, now and in the future, relevant ecological economic and social functions, at local, national and global levels, and that does not cause damage on other ecosystems

Question

Based on definition,

- What would you like to achieve, through pilot activities under this project?
- What are the expected outcomes from pilot activities?



<Objective>

- 1) Develop a model approach for Community-driven SFRM
- 2) Identify possible alternatives of forest resource usage and/or generating income for the community

Community-base Sustainable Forest Resource Management <Concept>

Ideal situation of CbSFRM



Basic Understanding of CbSFRM



Community based
Sustainable Forest
Resource Management

but



It can not run by itself



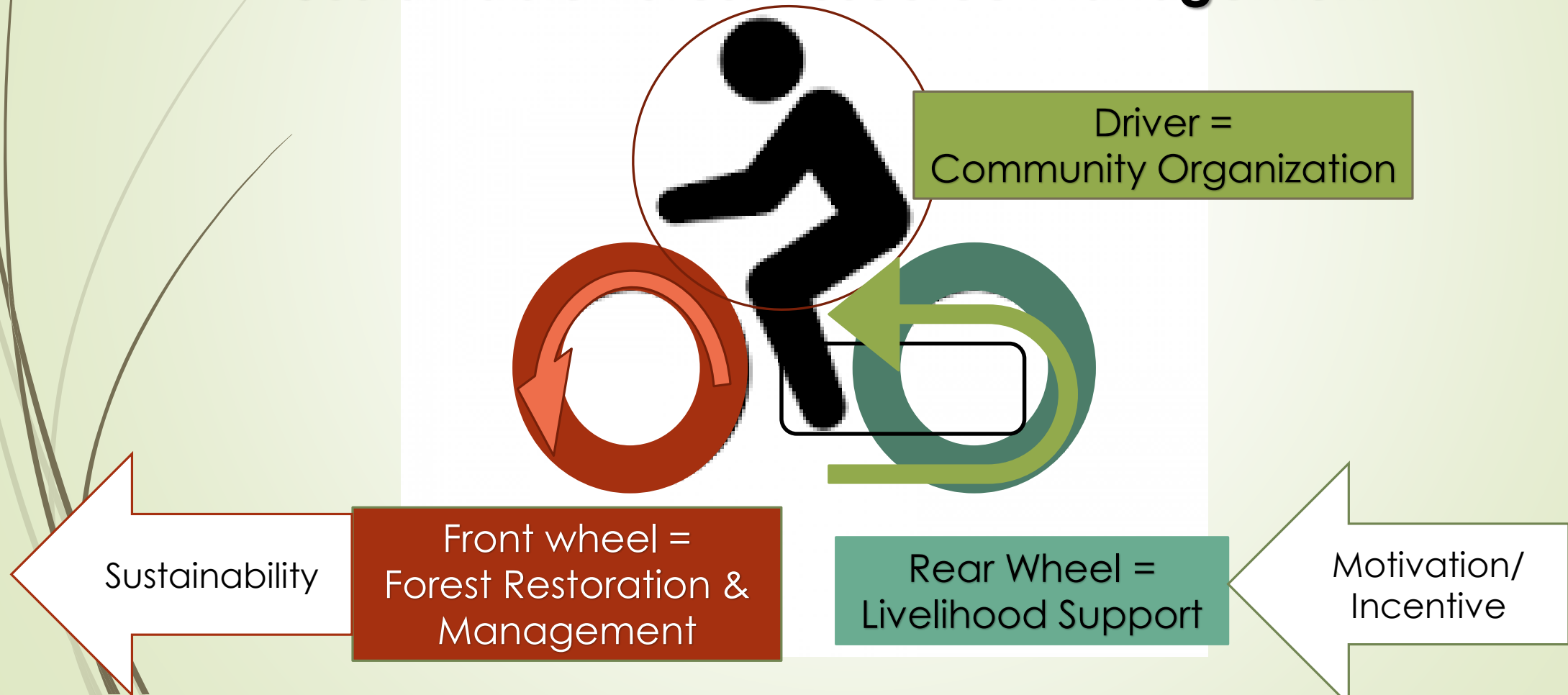
Need a motivated driver



Need strong tires

The Concept of CbSFRM

Community based Sustainable Forest Resource Management



Basic Concept of CbSFRM



Not so easy for the beginner to drive it



Need guidance and trainings

Monitoring & Evaluation

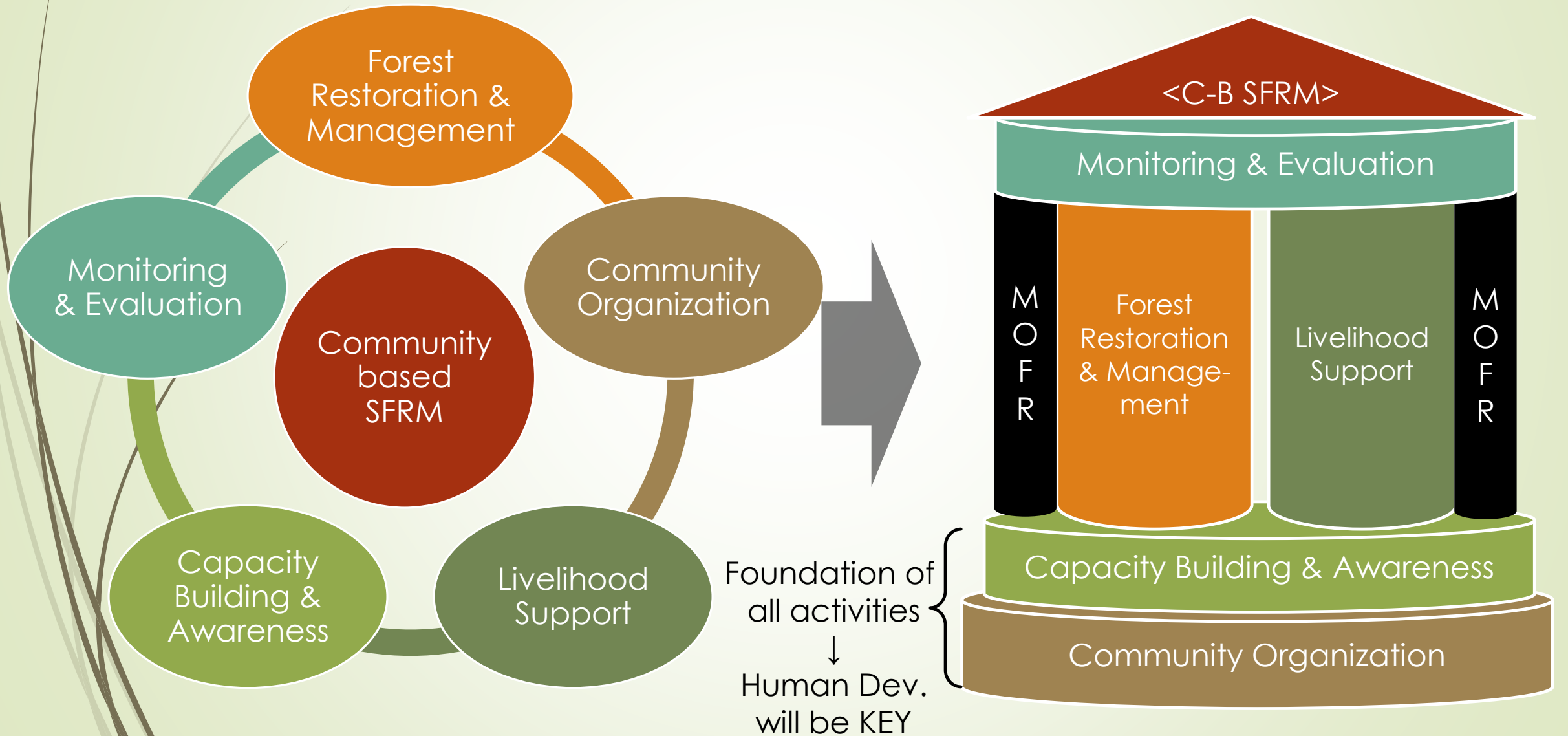
Capacity Building & Awareness



Need training wheels

Support from MOFR
(and other resource organization/personnel)

Key Elements of CbSFRM



Community-base Sustainable Forest Resource Management <Overview of Activities>

the Pilot Activities defined in Appraisal Document

Activity No	Description
Activity 3.1:	Select the Pilot Sites in accordance with the Pilot Sites selection criteria.
Activity 3.2:	Conduct community profiling in collaboration with the community people and socio-economic analysis in/around the Pilot Sites.
Activity 3.3:	Support and facilitate the Pilot Sites communities to develop Pilot Activities implementation plans.
Activity 3.4:	Support and facilitate the implementation of the plans by the communities.
Activity 3.5:	Monitor and evaluate the Pilot Activities from the viewpoint of their contribution to SFRM.
Activity 3.6:	Analyze and compile lessons learned from the Pilot Activities



- Activity 1.6: Reflect (Omitted) the lessons learned from the Pilot Activities (Activity 3.6) into planning of Corporate Plan 2023-2027

What is the Taskforce Team for?

Formation of Taskforce Team

- What is the backbone of the idea of taskforce team formation for the pilot?
 - It is critically important that a local-context-based effective and sustainable approach for CbSFRM to be developed by local experts like you all.
- What is the purpose of Taskforce?
 - For MOFR to have a functional group of people who can focus on pilot activities, so as to achieve the objective of pilot activities within the project period

Formation of Taskforce Team

- Why does this taskforce team need to be consisted with all divisions?
- Existing resources (knowledge, skills, network and lessons learned etc.) that each division has shall be all gathered and utilized, in order to plan and implement and monitor the activities in a timely and effective manner.

Appointed Members for Taskforce Team

No	Name	Resignation	Position
1	Mr. Figert Rodger	Reforestation Division	Team Leader
2	Ms. Stephanie Rikoi	Timber Utilization Division	Vice Team Leader
3	Mr. Gusgrandy Mua	FRM and Technical Service Division	
4	Mr. Johnson Palmer	Operation Division	
5	Ms. Julia Aimaea	National Herbarium & Botanical Garden	
6	Ms. Marilyn Qolu	License Division	
7	Mr. Bradford Theonomi	Corporate Service Division	

25

Roles & Responsibilities and Rules of Taskforce Team

Roles & Responsibilities and Rules of Taskforce Team

- Be responsible for executing activities related with pilot activities
- Have team meetings every two weeks for smooth and timely execution of necessary actions by the team.

In case of not available to attend the meeting, appoint someone from your division to brief the updates to the rest of the members on your behalf.

- Have close consultations with MOFR Management officials though taking part in monthly management meeting of MOFR

1st Task of Team Members

Please discuss within your division regarding;

- What are the roles of your divisions to design, implement, monitor, and evaluate community-based SFRM activities?
- “What your division can do for the pilot activities?”
- “What kind of values you can add on to the pilot activities?”

1st Action to be taken for
the pilot activities

Pilot Sites Selection <Selection Criteria>

Selection Criteria for the Pilot Site

No	Agreed Criteria between JICA and MOFR
1	Local People relying on forest resources
2	Local people who recognize forest degradation and are willing to improve their environment
3	Willingness of local people to participate in the pilot activities
4	Easy access
5	Commitment by provincial office as well as HQ of MOFR
6	Forest management to be improved by community-based activities
7	Significant deforestation / forest degradation
8	Secured land without conflict with land-right/land-use

Since some of above criteria are subjective and general, measurable and objective sub-criteria may need to be developed.

Pilot Site Selection <Selection Procedure>

Selection Procedure with timeframe

Preparation

- Preliminary data collection and review on ongoing/completed Community-based Resource Management Projects/Activities conducted by other organizations
- Review on selection criteria and development of sub-criteria
- List up potential sites proposed/recommended by MOFR (Long-list)
- Data collection regarding proposed potential sites

Apr - Sep

Selection

- Develop and finalize selection procedure and methodology
- Shortlisting of the potential sites through selection criteria/sub-criteria
- Field inspection at priority shortlisted communities
- Final select of pilot sites based on result of inspection

Oct - Dec

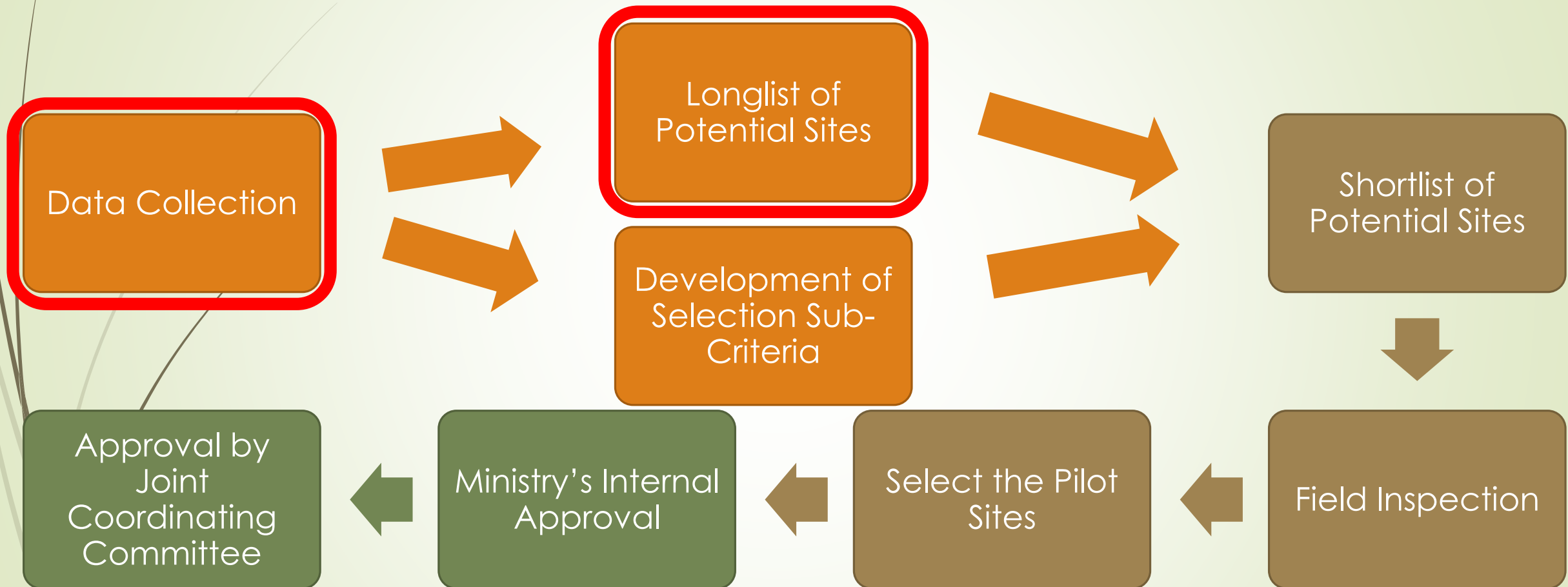
Approval

- MOFR Internal Approval
- JCC Approval
- Formal agreement with Community

Dec

The number of pilot sites would be 1 or 2. One of the sites should be located near Honiara, preferably.

Flow of Selection Procedure



Actions to be taken by Taskforce Members

Responsibility Assignment Matrix: Selection

	Figert	Steph	Gus	Palmer	Julia	Bradford	Marilyne	JICA Experts
Develop divisional roles (what your division can do for the pilot community)	R	R	R	R	R	R	R	N
Propose potential communities with willingness to improve their forest	R	R	R	R	R	R	R	N
Data Collection								
1) Map Data			R					S N
2) Location of Logging Operation Area with license info			R	S			S	N
3) Record of Reforestation/Forest Restoration Program with location	R		S					N
4) Information of the species with market demand/value (trees, medicinal plants, flower, spices, aromatic plants etc.)		R			R			N
5) Availability of human resource at Provincial Office	R	S	S	R	S	S	S	N

Key: R = Responsible, S = Support Required, C = Must be Consulted, N = Must be Notified

Request for Assistance

- Please inform any information/lessons learned regarding project / programme related with Community-based forest management, Customary-based natural resource management and Community Forestry, etc.
- Please introduce any organization and/or individual who has experience in abovementioned fields.

Next meeting of Taskforce Team

MAY 2018						
Sun	Mon	Tue	Wed	Thu	Fri	Sat
		1	2	3	4	5
6	7	8	9	10	11	12
13	14	15	16	17	18	19
20	21	22	23	24	25	26
27	28	29	30	31		

JUNE 2018						
Sun	Mon	Tue	Wed	Thu	Fri	Sat
					1	2
3	4	5	6	7	8	9
10	11	12	13	14	15	16
17	18	19	20	21	22	23
24	25	26	27	28	29	30

Taigo Tumas na Woka Tugeda