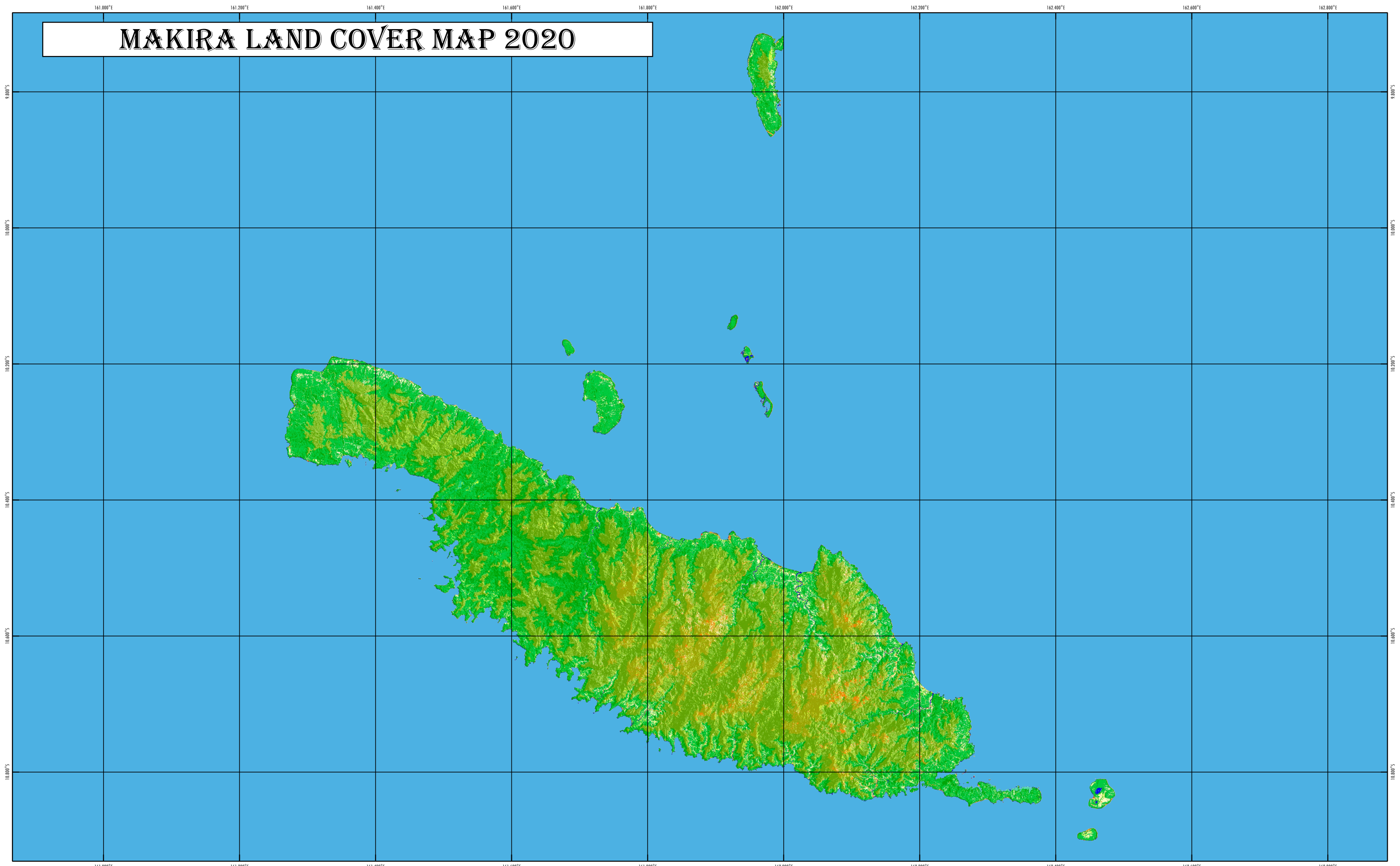


MAKIRA LAND COVER MAP 2020



Solomon Islands
Government
Ministry of Forestry and Research

LAND COVER MAP 2020 OF SOLOMON ISLANDS

Land Cover Map 2020 is derived on mosaic Landsat 8 imagery, from 2015 to 2019 at 30m pixel/ resolution imagery. Ministry of Forest and Research created the map in collaboration with FAO and JICA in 2021. Classification has done by Random Forest Methodology using Sepal with SRTM and JRC global surface water as auxiliary sources.

Copyright © 2021 Ministry of Forestry and Research, Solomon Islands
Projection Latitude/ Longitude, Datum WGS84, Scale 1:600,000

Land Cover Type					
	Lowland forest Primary		Montane forest Degraded		Otherland
	Lowland forest Degraded		Mangrove		Grassland
	Hill forest Primary		Swamp riverine forest		Crop subsistence
	Hill forest Degraded		Forest Plantation		Crop Palm
	Montane forest Primary		Water		Crop Coconut
			Settlement		

