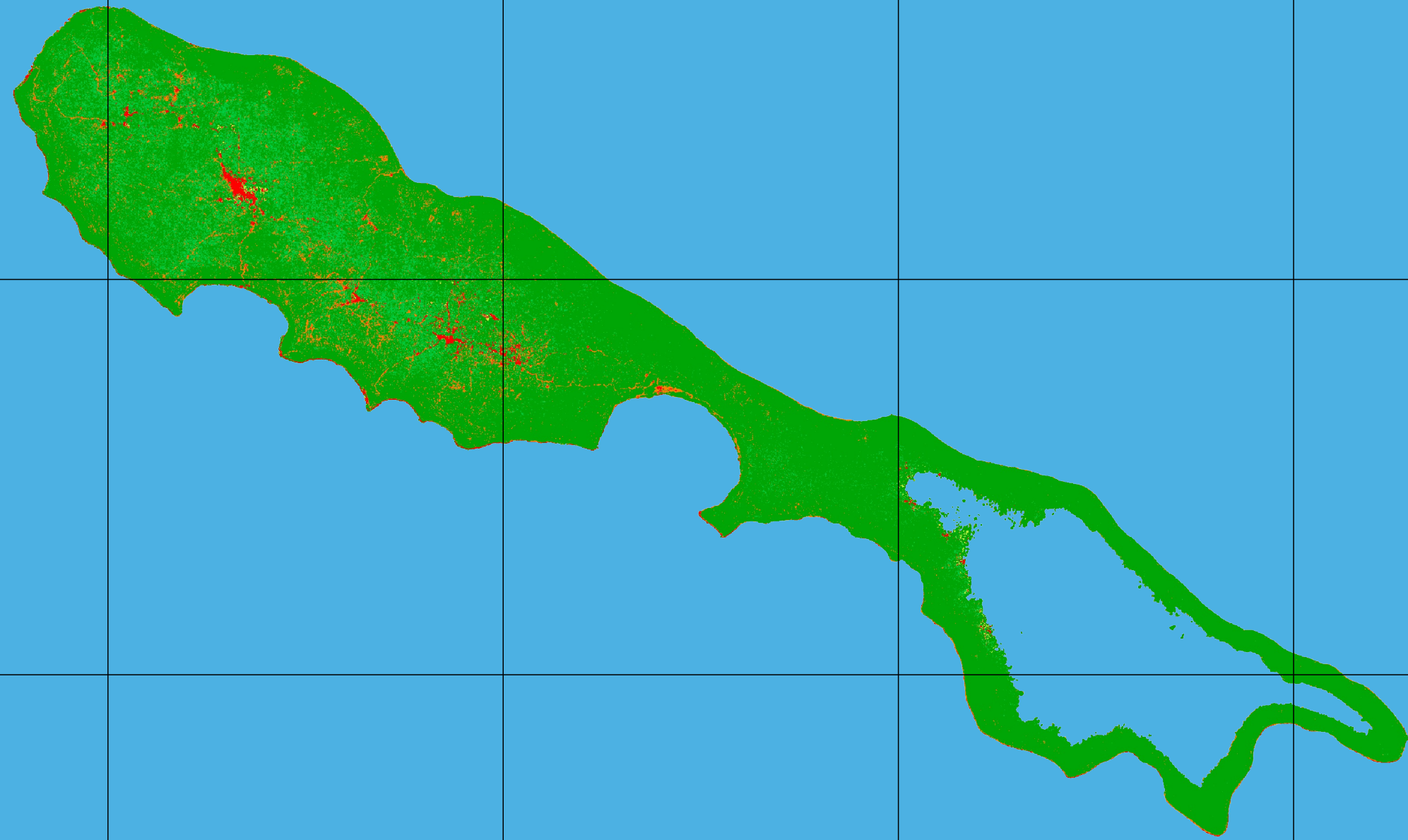
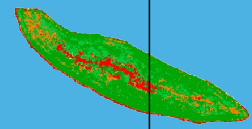


RENNELL & BELLONA LAND COVER MAP 2020



Solomon Islands
Government
Ministry of Forestry and Research

LAND COVER MAP 2020 OF SOLOMON ISLANDS

Land Cover Map 2020 is derived on mosaic Landsat 8 imagery, from 2015 to 2019 at 30m pixel/resolution imagery. Ministry of Forest and Research created the map in collaboration with FAO and JICA in 2021. Classification has done by Random Forest Methodology using Sepal with SRTM and JRC global surface water as auxiliary sources.

Copyright © 2021 Ministry of Forestry and Research, Solomon Islands

Publication: 1st Edition / Date: 1/2022 / Scale: 1/200,000

Land Cover Type

- Lowland forest Primary
- Lowland forest Degraded
- Hill forest Primary
- Hill forest Degraded
- Montane forest Primary

- Montane forest Degraded
- Mangrove
- Swamp riverine forest
- Forest Plantation
- Water
- Settlement

- Otherland
- Grassland
- Crop subsistence
- Crop Palm
- Crop Coconut

