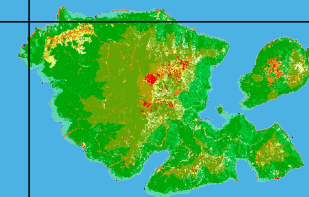
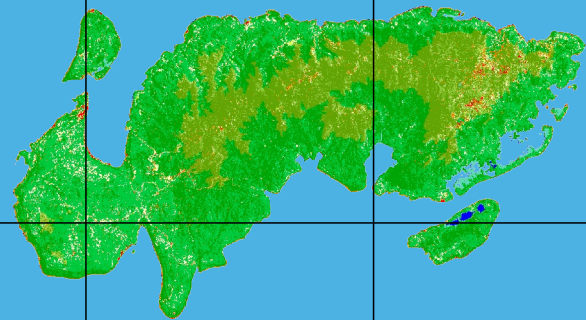


# TEMOTU LAND COVER MAP 2020



Solomon Islands  
Government  
Ministry of Forestry and Research

## LAND COVER MAP 2020 OF SOLOMON ISLANDS

Land Cover Map 2020 is derived on mosaic Landsat 8 imagery, from 2015 to 2019 at 30m pixel/ resolution imagery. Ministry of Forest and Research created the map in collaboration with FAO and JICA in 2021. Classification has done by Random Forest Methodology using Sepal with SRTM and JRC global surface water as auxiliary sources.

Copyright © 2021 Ministry of Forestry and Research, Solomon Islands  
Projection Latitude/ Longitude, Datum WGS84, Scale 1:600,000

### Land Cover Type

- |                         |                       |                  |
|-------------------------|-----------------------|------------------|
| Lowland forest Primary  | Mangrove              | Otherland        |
| Lowland forest Degraded | Swamp riverine forest | Grassland        |
| Hill forest Primary     | Forest Plantation     | Crop subsistence |
| Hill forest Degraded    | Water                 | Crop Palm        |
| Montane forest Primary  | Settlement            | Crop Coconut     |
| Montane forest Degraded |                       |                  |

